

### ANGEL (FIRST CLASS)



3  
 3  
 2  
 8

**ANGEL**

#### ATTACK FROM ABOVE (x2)

Move to any Location and defeat 2 there.

#### WORTHINGTON INDUSTRIES

##### RESOURCES (x2)

Distribute 2 tokens from the pool among any number of Heroes.

FIRST CLASS

SEASON 2

### APOCALYPSE



7  
 0  
 4  
 5

**APOCALYPSE**

#### IMMORTALITY

(STARTING HAND)

Draw 1 card. As long as this card is face up in the Storyline, when you are KO'd, the Villain doesn't activate their BAM! or any alternate effects.

#### SURVIVAL OF THE FITTEST (x3)

You must deal 1 damage to everything else in your Location. Discard all there. Turn card facedown.

#### SELF MOLECULAR MANIPULATION (x2)

You must draw 2 cards, if possible. Turn this card facedown.

#### CELESTIAL ENERGY MANIPULATION (x2)

You must gain tokens. Turn card facedown.

THE HORSEMEN OF APOCALYPSE

SEASON 2

### ARCHANGEL



3  
 2  
 3  
 9

**ARCHANGEL**

#### WING SHIELDING (x2)

You cannot take any damage until the beginning of your next turn.

#### TECHNO ORGANIC WINGS (x2)

in an adjacent Location.

GOLD TEAM

SEASON 2

### BANSHEE



3  
 2  
 5  
 6

**BANSHEE**

#### SONIC BLASTS (x2)

in an adjacent Location.

#### STUNNING WAVES (x2)

Attach a Stunned token to a Villain or Henchman in your Location. Next Villain turn, their BAM! is canceled and the token is discarded.

BLUE TEAM

SEASON 2

### BEAST



3  
 7  
 4  
 6

**BEAST**

#### GENIUS INTELLIGENCE (x2)

This turn, you can treat as .

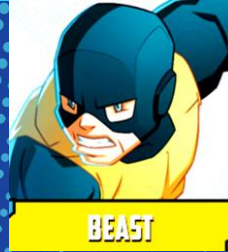
#### REGENERATING FACTOR (x2)

You may draw cards until you have 3 in your hand.

CORE SET

SEASON 2

### BEAST (FIRST CLASS)



3  
 7  
 3  
 5

**BEAST**

#### STAR ATHLETE (x2)

#### BRILLIANT STUDENT (x2)

Gain 1 , , or .

FIRST CLASS

SEASON 2

### BISHOP



3  
 7  
 4  
 3

**BISHOP**

#### ENERGY RESISTANCE

(STARTING HAND)

As long as this card is faceup in the Storyline, you cannot take any damage dealt from adjacent Locations.

#### ENERGY ABSORPTION (x3)

Gain 1 token. You may ignore 1 damage until the beginning of your next turn.

GOLD TEAM

SEASON 2

### BLINK



4  
 4  
 4  
 5

**BLINK**

#### WARP PORTALS (x4)

Move to any Location. Then you may move any Heroes to your Location.

KICKSTARTER EXCLUSIVE

SEASON 2

### BOB, AGENT OF HYDRA



5  
 3  
 2  
 3

**BOB, AGENT OF HYDRA**

#### RUN AWAY!

Until the beginning of your next turn, if a Villain ends their movement in your Location, you must move to the next clockwise location.

#### DEADPOOL'S PET

Until the beginning of your next turn, if you have to discard cards, you can have Hero Deadpool discard that number of cards instead.

#### ACCIDENTALLY HEROIC

Clear a Threat card in your Location. Then, discard all cards from your hand to the bottom of your deck.

#### THROW CLUMSILY

Give 2 tokens from the pool to another Hero in your Location. Accelerate the next Villain turn by 1 card.

#### PLAN Z

Add 2 or 2 or 1 token to a corresponding Mission card of your choice. Accelerate the next Villain turn by 1 card.

#### I WISH I JOINED A.I.M. INSTEAD

Gain 1 token. Other Heroes discard 1 Action token (if any).

#### NESSING UP STUFF

Draw Master Plan card facedown or give each Hero a crisis token.

DEADPOOL

SEASON 2

## ARCHANGEL



	3
	2
	3
	9

**ARCHANGEL**

**REAL NAME:** Warren Kenneth Worthington III  
Warren Worthington III mutated wings during adolescence and gained the ability to fly. Swooped up by Professor X, he fought alongside the X-Men, the Champions, the Defenders, and X-Factor. When his wings were destroyed in the Mutant Massacre, he was brainwashed by Apocalypse who gave him metal wings and turned him into Archangel. He returned to X-Men and X-Force while secretly remaining Archangel.

GOLD TEAM

SEASON 2

## APOCALYPSE



	7
	0
	4
	5

**APOCALYPSE**

**REAL NAME:** En Sabah Nur  
Believing in the principle of "Survival of the Fittest" En Sabah Nur was a feared warrior who declared himself Apocalypse. Possessing a variety of extraordinary abilities, including time travel and immortality, Apocalypse was known as a formidable villain throughout his long history. With the founding of Krakoa by Professor X, Apocalypse travels there alongside other former enemies of the X-Men, confesses his past history, and agrees to submit to the laws of the new mutant nation. He is given a place on the ruling body of Krakoa, alongside Xavier and Magneto.

THE HORSEMEN OF APOCALYPSE

SEASON 2

## ANGEL (FIRST CLASS)



	3
	3
	2
	8

**ANGEL**

**REAL NAME:** Warren Kenneth Worthington III  
When Professor Xavier convinced Warren Worthington to join his newly forming group, he'd been busy as the self-named superhero Avenging Angel. Xavier brought him to his school and trained him as the third original X-Men member. He dropped the Avenging part of his name and just went by Angel. Having been born with a silver spoon and the entitlement that accompanies it, he worried little about showing off his feathered wings and ability to fly in public. But he was a valued member of the original team.

FIRST CLASS

SEASON 2

## BEAST (FIRST CLASS)



	3
	7
	3
	5

**BEAST**

**REAL NAME:** Henry "Hank" McCoy  
Hank was an extremely intelligent boy with huge feet, hands, and superhuman athleticism due to a run-in with radiation. In college he dominated the football field but was forced to leave when they discovered he was a mutant. This put him on Xavier's radar who sought him out. Unfortunately, the Conquistador got to him first. Rescuing him from mind-control, Xavier recruited him to the School for Gifted Youngsters. There Hank's genius mind was allowed free reign without worry of being taken over. He became Beast and spent time fighting heroically as the fourth X-Man.

FIRST CLASS

SEASON 2

## BEAST



	3
	7
	4
	6

**BEAST**

**REAL NAME:** Henry "Hank" McCoy  
An unusual mutant whose simian physique was apparent at birth, Hank McCoy was gifted with a vast intellect complementing his prodigious strength. Recruited personally by Professor X to study at the Xavier Institute, McCoy became one of the founding members of the X-Men. Later, in an experiment gone wrong, McCoy accidentally altered his own DNA, resulting in the addition of blue fur and other animal-like mutations, forever cementing his identity as Beast.

CORE SET

SEASON 2

## BANSHEE



	3
	2
	5
	6

**BANSHEE**

**REAL NAME:** Sean Cassidy  
Former Interpol agent with an Audiokinesis mutation. Irish-born Sean Cassidy Banshee was manipulated by the evil Factor Three into participating in criminal activities. Freed by Professor X, he joined the X-Men and helped them succeed in many battles. After falling in love with the geneticist Dr. Moira MacTaggart, he founded the new Generation X with Emma Frost.

BLUE TEAM

SEASON 2

## BOB, AGENT OF HYDRA



	5
	3
	2
	3

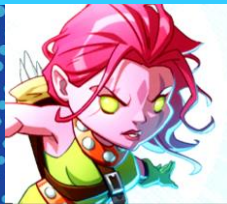
**BOB, AGENT OF HYDRA**

**REAL NAME:** Robert Dabalina  
Deadpool's sidekick Bob was goaded into joining Hydra by his wife who berated him for not having a steady job. Having met Deadpool on one of his Hydra missions, he was convinced to turn away from the evil corporation and help Deadpool instead. As an honorary member of Agency X, he worked with them as best he could since he had no powers or abilities.

DEADPOOL

SEASON 2

## BLINK



	4
	4
	4
	5

**BLINK**

**REAL NAME:** Clarice Ferguson  
Clarice Ferguson was kidnapped at a young age by the Phalanx, a technological alien race that wanted to experiment on her and other mutants. When they were rescued by the X-Men, Blink used her teleportation powers to attack the Phalanx. In doing so, she overwhelmed her powers and died saving her rescuers. In fact, she'd been teleported to a close dimension and was pulled back by Dark Priestess Selene. Dr. Strange was able to free her from Selene's power and she joined the X-Men, fighting alongside them.

KICKSTARTER EXCLUSIVE

SEASON 2

## BISHOP



	3
	7
	4
	3

**BISHOP**

**REAL NAME:** Lucas Bishop  
Born during the future time of the mutant-hunting robot Sentinels. Lucas Bishop escaped through a portal back in time. He joined the X-Men in hopes of preventing the future. With his knowledge, he helped the X-Men by preventing their deaths. Traveling to the future and back, Bishop fought many battles for the X-Men. But when the baby Mutant Messiah was born marking Bishop's bleak future, he attempted to murder it, but accidentally killed Xavier instead.

GOLD TEAM

SEASON 2



**BOOM-BOOM**

	3
	2
	3
	8

**BOOM-BOOM****MELTDOWN (x2)**

against a single target in an adjacent Location.

**TIME BOMB (x2)**

Place a Bomb token in your Location or an adjacent one. At the start of the next Villain turn, remove the token, deal 1 damage to EVERYTHING else in the Location, and discard all there.

KICKSTARTER EXCLUSIVE

SEASON 2

**CABLE**

	7
	3
	3
	1

**CABLE****TECHNOACTIVE MANIPULATION (x2)**

Discard 1 card from your hand to the bottom of your deck to perform .

**TECHNO-ORGANIC****PHYSIOLOGY (x2)**

and you may draw cards until you have 3 in your hand.

**PSYCHIC MASTERY (x2)**

Each Hero draws 1 card. Then they discard 1 card from their hand to the bottom of deck.

X-FORCE

SEASON 2

**CANNONBALL**

	3
	2
	3
	9

**CANNONBALL****BLAST FIELD (x2)**

Gain 1 token.

You cannot take any damage until the Beginning of your next turn.

**ENERGY FIELD PROPULSION (x2)**

This turn, each time you perform a action, gain 1 token.

X-FORCE

SEASON 2

**CAPTAIN BRITAIN**

	3
	3
	2
	8

**CAPTAIN BRITAIN****CHANNEL INTERDIMENSIONAL ENERGY (x4)**

Draw 1 card OR gain any combination of 2 , , or tokens.

KICKSTARTER EXCLUSIVE

SEASON 2

**CLOAK**

	3
	5
	3
	6

**CLOAK****DARKFORCE TELEPORTATION**(STARTING HAND)

As long as this card is faceup in the Storyline, you can use to move to any Location. If Dagger is in your Location, she can move with you.

**BOND**

If Dagger is in your Location, she may draw cards until there are 3 in his hand.

**DARKFORCE CHANNELLING (x2)**

Remove both Cloak and a Henchman in his Location from play. At the beginning of your next turn, put them in any Location with no Threat and deal 2 damage to that Henchman.

KICKSTARTER EXCLUSIVE

SEASON 2

**COLOSSUS**

	3
	2
	6
	6

**COLOSSUS****ORGANIC STEEL BODY**(STARTING HAND)

As long as this card is faceup in the Storyline, you may ignore 1 damage during each Villain turn.

**FASTBALL SPECIAL (x3)**

Move another Hero from your Location to an adjacent Location. That Hero shows their hand and deals as many there as shown at the bottom of their cards.

GOLD TEAM

SEASON 2

**CYCLOPS**

	3
	6
	5
	3

**CYCLOPS****LEADERSHIP (x2)**

Give 1 token from the pool to another Hero.

**OPTIC BLASTS (x2)**

in both adjacent Locations.

CORE SET

SEASON 2

**CYCLOPS (FIRST CLASS)**

	3
	6
	3
	5

**CYCLOPS****PRECISION BLAST (x2)**

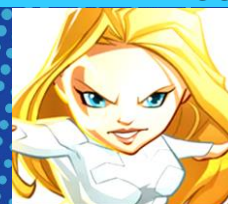
in an adjacent Location.

**OPTIC BLASTS (x2)**

Deal 1 damage to EVERYTHING else in this Location (except Havok). Discard all here.

FIRST CLASS

SEASON 2

**DAGGER**

	3
	4
	3
	7

**DAGGER****LIGHTFORCE GENERATION**(STARTING HAND)

As long as this card is faceup in the Storyline, if you start your turn with 2 or more cards in hand (before the Draw step), you may immediately perform a free in your Location.

**BOND**

If Cloak is in your Location, he may draw cards until there are 3 in his hand.

**LIGHTFORCE PURGE**

Turn up to 2 in your Location into .

Then rescue them.

**LIGHTFORCE DAGGERS**

against up to 3 different targets in your Location.

KICKSTARTER EXCLUSIVE

SEASON 2

## CANNONBALL



CANNONBALL

**REAL NAME: Sam Guthrie**  
Kentucky boy Samuel Guthrie grew up on a farm. After being trapped in a coal mine, his blasting powers manifested for the first time, allowing him to escape. Manipulated by Donald Pierce into serving as a member of the Hellfire Club, he was sent to fight Professor X and his team. Instead of battling them, he was invited to join the New Mutants. He also spent time in his long career with the Avengers fighting evil, ultimately leading him back to the X-Men.

X-FORCE

SEASON 2

## CABLE



CABLE

**REAL NAME: Nathan Summers**  
Mutant Nathan Summers, the son of Madelyn Pryor – a clone of Jean Grey – and Scott Summers, was devised by Mister Sinister in hopes of creating a super mutant who would defeat Apocalypse. He was indeed extremely powerful with telepathic and telekinetic abilities. Unfortunately, Apocalypse infected him with a techno-organic virus and Cable was sent into the future in hopes of salvation. He returned with a metal arm and a robotic eye and a penchant for taking down Super Villains.

X-FORCE

SEASON 2

## BOOM-BOOM



BOOM-BOOM

**REAL NAME: Tabitha Smith**  
Teenage runaway Tabitha Smith left after her parents reacted badly to her innate ability to fire time bombs from her hands. After running away, she renamed herself Boom-Boom and ended up in a criminal gang led by Vanisher called the Fallen Angels. She sought out the X-Factor to help her destroy Vanisher, who she felt treated her badly. Though she decided not to turn Vanisher in, she left with the X-Factor and joined them and later the X-Men. She loved pranking her fellow mutants by firing off time bombs, and did it often.

KICKSTARTER EXCLUSIVE

SEASON 2

## COLOSSUS



COLOSSUS

**REAL NAME: Piotr Nikolaievitch Rasputin**  
Piotr Rasputin grew up with his two mutant siblings, quietly manifesting his ability to become human steel desiring to live a simple life. After being discovered by Professor X, he became the peaceful giant Colossus, fighting for justice with the X-Men. When certain tragedies affected him deeply, he briefly joined Magneto's force. But once a cure was found for the Legacy Virus, he went back to the X-Men to continue helping with their fight.

GOLD TEAM

SEASON 2

## CLOAK



CLOAK

**REAL NAME: Tyrone "Ty" Johnson**  
While best known for his association with Dagger (Tandy Bowen), Cloak is still a force to be reckoned with on his own. Gifted with teleportation and intangibility, Cloak has access to the "Darkforce Dimension," a world of strange ebony energy. While formidable alone, Cloak's relationship with Dagger makes the team nearly unstoppable.

KICKSTARTER EXCLUSIVE

SEASON 2

## CAPTAIN BRITAIN



CAPTAIN BRITAIN

**REAL NAME: Brian Braddock**  
Dr. Brian Braddock was a brilliant scientist granted magical powers by Merlyn the sorcerer. Powered by the Amulet of Right, he became Captain Britain and defeated Reaver and many other foes. At first, his superhuman powers could only be activated when wearing his costume, but over time Merlyn 'upgraded' him, enabling him to use the powers whether or not he was in it. He teamed up with members of the Avengers battling evil forces and eventually became the leader of the powerful superhero team, the Champions of Europe.

KICKSTARTER EXCLUSIVE

SEASON 2

## DAGGER



DAGGER

**REAL NAME: Tandy Bowen**  
Tandy Bowen's life started in privilege, but it wasn't the life for which she was destined. The teenage rebel's path took a super-powered turn when she crossed paths with Tyrone "Ty" Johnson and the two ended up participating in a shady scientific experiment. Because of this, the duo developed powers that balanced each other. Tandy became Dagger, an embodiment of light with the power to create beautiful yet dangerous daggers of light.

KICKSTARTER EXCLUSIVE

SEASON 2

## CYCLOPS (FIRST CLASS)



CYCLOPS

**REAL NAME: Scott Summers**  
After heroically rescuing Scott Summers from the villainous Living Diamond, Professor Xavier convinced him to join the School for Gifted Youngsters. Dubbed Cyclops, Summers had the distinct honor of being the first member of the X-Men. He helped the Professor recruit other mutants to join the prestigious team. Though he had a fear of controlling his powerful optic blast mutation, he was a natural leader and excelled at commanding the group and fighting for good.

FIRST CLASS

SEASON 2

## CYCLOPS



CYCLOPS

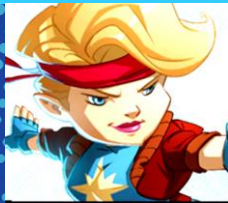
**REAL NAME: Scott Summers**  
At an early age, Scott Summers' devastating mutant power first manifested, causing his eyes to persistently emit a destructive optic blast any time they remained open. Seemingly cursed by this mutation, Scott's life was turned around under the guidance of Professor Charles Xavier, who provided Scott with a unique ruby quartz visor to control his powers. In turn, Scott came to devote his life to Xavier's dream of peace between humans and mutants, becoming the iconic Cyclops, leader of the X-Men!

CORE SET

SEASON 2



### DAZZLER



	3
	3
	2
	8

**DAZZLER**

#### LIGHT PROJECTION (x2)

Gain tokens equal to the number of in your Location.

#### SOUND CONVERSION (x2)

Gain tokens equal to the number of in your Location.

KICKSTARTER EXCLUSIVE

SEASON 2

### DEADPOOL



	5
	1
	4
	3

**DEADPOOL**

#### MAXIMUM EFFORT (x2)

against single target.

#### UNPREDICTABLE (x2)

Gain 1 token but play next card randomly.

#### FIGHT THROUGH THE PAIN (x2)

Gain 1 . You may ignore 1 damage until next turn.

#### BREAKING THE FOURTH WALL (x2)

You must draw the top 2 cards from the Deadpool challenge deck, choose 1 and resolve it.

#### REGENERATIVE HEALING FACTOR

(STARTING HAND)

As long as this card is faceup in the Storyline, if you have less than 3 cards in hand at the end of a Villain turn, you may draw 1 card.

#### RESISTANCE TO EVERYTHING

Deadpool ignores any special effects on next master plan card.

DEADPOOL

SEASON 2

### DOCTOR DOOM



	8
	1
	4
	3

**DOCTOR DOOM**

#### PAIN IS FOR LESSER MEN

(STARTING HAND)

As long as this card is faceup in the Storyline, for each damage you take during a Villain turn, you may gain 1 , 1 , or 1 token.

#### MINE IS THE POWER (x3)

This turn, you can use the symbols at the bottom of the 3 previous Hero cards in the Storyline (instead of only the previous one).

Then, turn them all facedown.

FANTASTIC FOUR

SEASON 2

### DOMINO



	6
	1
	4
	4

**DOMINO**

#### PROBABILITY

#### MANIPULATION (x3)

If this is the latest Domino card in the Storyline, effects of Henchmen are cancelled during the next Villain turn.

#### MASTER ASSASSIN

to a single Villain or Henchman in your Location.

X-FORCE

SEASON 2

### DOOP



	4
	2
	1
	6

**DOOP**

#### ACCELERATED REGENERATION

(STARTING HAND)

As long as this card is faceup in the Storyline, gain 1 token whenever you are KO'd.

#### PROFESSIONAL VIDEOGRAPHER

(STARTING HAND)

As long as this card is faceup in the Storyline, if another Hero performs 2 or more or in your Location, that Hero gains 1 token.

#### TRAVEL ACROSS THE MARGINS (x2)

At the end of your turn, swap this card with any Hero card in the Storyline.

#### PSIONIC MASS CONTROL

Relocate any number of and between Locations.

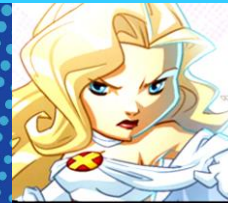
#### DIMENSIONAL GATE

Move to any Location and there.

KICKSTARTER EXCLUSIVE

SEASON 2

### EMMA FROST



	5
	7
	2
	3

**EMMA FROST**

#### OMEGA CLASS TELEPATH (x2)

This turn, you can use the symbols at the bottom of the 2 previous Hero cards in the Storyline (instead of only the previous 1).

#### ORGANIC DIAMOND FORM (x2)

If you have less than 3 cards in hand, draw 1 card. You cannot take any damage until the beginning of your next turn.

KICKSTARTER EXCLUSIVE

SEASON 2

### FANTOMEX



	8
	1
	1
	2

**FANTOMEX**

#### MISDIRECTION

(STARTING HAND)

As long as this card is faceup in the Storyline, when the top card of the Master Plan deck is revealed, you may immediately move to an adjacent Location.

#### CYBER MIND

(STARTING HAND)

As long as this card is faceup in the Storyline, at the end of each Villain turn, you may perform 1 or 1 in the Villain's Location.

#### ANALYTIC INTELLIGENCE (x2)

Look at the top card of the Master Plan deck and put it back on top.

KICKSTARTER EXCLUSIVE

SEASON 2

### FERAL



	3
	3
	4
	7

**FERAL**

#### CLAWS AND TEETH (x2)

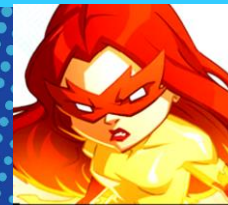
#### ACUTE SENSES (x2)

The next time you would take 1 damage or be assigned 1 Crisis token, you may flip this card facedown to ignore it.

KICKSTARTER EXCLUSIVE

SEASON 2

### FIRESTAR



	3
	2
	3
	9

**FIRESTAR**

#### MICROWAVE ENERGY MANIPULATION (x2)

#### MICROWAVE HEAT EMISSION (x2)

against a single target in your Location.

KICKSTARTER EXCLUSIVE

SEASON 2



**DOCTOR DOOM****DOCTOR DOOM****REAL NAME: Dr. Victor von Doom**

Doctor Doom is a Latverian politician who serves as the monarch and supreme leader for the Kingdom of Latveria. He was scarred from an accident and wears an iron mask and armor to hide his face. Considered to be one of the most brilliant scientists on earth, he is also a sorcerer with the ability to match the magic of the most powerful beings in the universe. His driving force to bring order to humanity through world conquest. With no equal, he has become the foe of superhumans and cosmic beings alike, but his arch enemy is the Fantastic Four.

FANTASTIC FOUR

SEASON 2

**DEADPOOL****DEADPOOL****REAL NAME: Wade Wilson**

The "Merc with a Mouth" started out as international assassin Wade Wilson when inoperable cancer sent him looking for a cure. Canada's Weapon X program took him in and cured him of the cancer, while also giving him superhuman powers. Eventually he was too much for them to handle, so was sent off to Hospice. Instead of stripping him of his abilities, they tortured him through experimentation. After escaping, he continued as a mercenary and was found by S.H.I.E.L.D. Mostly though, he fought anyone he saw fit.

DEADPOOL

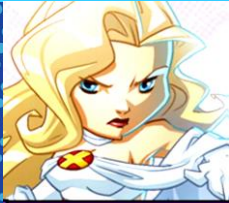
SEASON 2

**DAZZLER****DAZZLER****REAL NAME: Alison Blaire**

Alison Blaire wanted to be a singer despite her father's protests. During a school performance, her mutant abilities manifested by creating a brilliant light. Playing off of her abilities to manipulate music into colorful light, she became the performer Dazzler, though hiding her identity was challenging. The X-Men and the Hellfire Club fought for her to join them but Dazzler chose to continue her musical career. The psychic Malice possessed her and infiltrated the X-Men, but after she was defeated, Dazzler joined the X-Men and helped them fight evil.

KICKSTARTER EXCLUSIVE

SEASON 2

**EMMA FROST****EMMA FROST****REAL NAME: Emma Grace Frost**

Emma Frost's telepathic abilities started manifesting in school, allowing her to get answers from fellow classmate's minds. Her abilities included turning her body into an organic diamond form and astral projection. Frost moved up the ranks in the Hellfire Club to become White Queen and the headmistress at the Massachusetts Academy for Mutants. She later helped the X-Men, though her allegiance stayed on the side of evil.

KICKSTARTER EXCLUSIVE

SEASON 2

**DOOP****DOOP****REAL NAME: Unknown**

His past is something of a mystery. What is known: he was created by the U.S. government in a secret Cold War weapons project. He joined X-Force as their official videographer. When most of X-Force died, he, along with other survivors, became X-Statix. He'd eventually join Wolverine's side, and become the receptionist of the Jean Grey School for Higher Learning. Doop's powers appear as needed and include genius intellect, psionic powers, cohesion, superhuman strength, resurrection and durability.

KICKSTARTER EXCLUSIVE

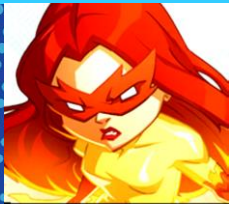
SEASON 2

**DOMINO****DOMINO****REAL NAME: Neena Thurman**

Born into the top-secret government Project Armageddon breeding program, Neena Thurman was genetically engineered to be the perfect weapon. Hired as a mercenary, she ended up as genius Milo Thurman's bodyguard and they fell in love. After a terrorist attack, she believed that Milo was dead and joined Six Pack, befriending Cable. Her probability field mutant power allowed her to shift odds to her favor making her extremely lucky. Always remaining independent, she helped the X-Men fight for mutant rights.

X-FORCE

SEASON 2

**FIRESTAR****FIRESTAR****REAL NAME: Angelica Jones**

Possessing mutant microwave energy powers, Angelica Jones was pursued by both Professor X and Emma Frost, the disguised White Queen of the Hellfire Club. Frost convinced Angelica's father to send her to the Massachusetts Academy mutant school where Angelica, now Firestar, was unknowingly being trained as an assassin. Once she became aware of her role in the evil group, she escaped. Founding the New Warriors with Night Thrasher, she fell in love with Justice, and joined the Avengers with him. Firestar chose to retire once the Superhuman Registration Act was enacted but came out of retirement to join the X-Men.

KICKSTARTER EXCLUSIVE

SEASON 2

**FERAL****FERAL****REAL NAME: Maria Callasantos**

A mutant with cat-like features, heightened senses and vision, and trouble dealing with her emotions and impulse, Maria Callasantos grew up in New York City. After killing her family members except her mutant sister Lucia, they joined the underground Morlock community of mutants. Feral found the X-Force, but her sister, now Thornn, went in the opposite direction and joined the Brotherhood of Evil Mutants. When X-Factor saved an anti-mutant, Feral joined the Mutant Liberation Front out of disgust. After contracting the Legacy Virus, she joined the Hellions, but after she was cured, she finally returned to the X-Men.

KICKSTARTER EXCLUSIVE

SEASON 2

**FANTOMEX****FANTOMEX****REAL NAME: Charlie-Cluster 7**

A super-sentinel created by fusing living technorganic material with Sentinel nanotechnology, Fantomex was a Weapon Program's Super-Soldier. He also enjoyed speaking with a French accent because he saw how much it annoyed people. Lying to Professor Xavier about being a wanted mutant thief at X-Corporation, he was granted asylum. Fantomex spent his time in pursuit of destroying Weapon Plus, his creator, often fighting at the X-Men's side.

KICKSTARTER EXCLUSIVE

SEASON 2

## FORGE



	5
	6
	3
	3

**FORGE**

### INTUITIVE GENIUS (x2)

This turn, for each you use to clear Threats, place .

### SPIRIT SIGHT (x2)

Pick another Location. This turn, you may use your and there.

GOLD TEAM

SEASON 2

## GAMBIT



	3
	3
	4
	8

**GAMBIT**

### MASTER THIEF (x2)

Gain 1 token and take 1 Action token of your choice from each other Hero.

### MOLECULAR ACCELERATION (x2)

Discard any Action token to in an adjacent Location.

BLUE TEAM

SEASON 2

## GUARDIAN



	3
	6
	5
	4

**GUARDIAN**

### LEADERSHIP

Give 1 token from the pool to another Hero.

**BATTLESUIT ARMOR**  
You cannot take damage until the beginning of your next turn.

### ALPHA FLIGHT

Gain 1 token for each faceup Alpha Flight card in the Storyline.

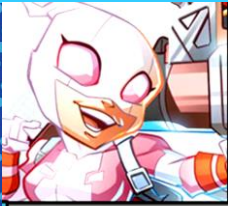
### ELECTROMAGNETIC BEAMS

against up to 2 different targets in your Location.

KICKSTARTER EXCLUSIVE

SEASON 2

## GWENPOOL



	3
	3
	4
	4

**GWENPOOL**

### JEFFREY, THE LAND SHARK

*(STARTING HAND)*  
As long as this card is faceup in the Storyline, at the end of your turn, you can deal 1 damage to a or Henchman in your Location that you did not damage this turn.

### SEND TO GUTTER SPACE (x2)

Remove both Gwenpool and a Henchman in her Location from play. At the beginning of your next turn, place them in any Location with no Threat and deal 2 damage to that Henchman.

### NO CONSEQUENCES IN A FICTIONAL WORLD (x2)

Discard cards until you have 1 in hand. For each card discarded, deal 1 damage to EVERYTHING else in your Location. Discard all there.

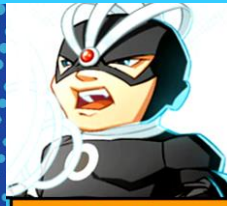
### MEDIUM AWARENESS (x2)

Flip any 2 cards in the Storyline.

KICKSTARTER EXCLUSIVE

SEASON 2

## HAVOK



	3
	3
	4
	4

**HAVOK**

### PLASMA BLAST (x2)

in 1 adjacent Location.

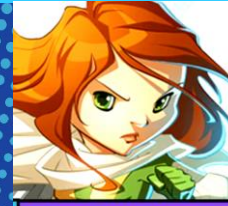
### ABSORB COSMIC ENERGY (x2)

Gain 1 token.  
You cannot take any damage until the beginning of your next turn.

KICKSTARTER EXCLUSIVE

SEASON 2

## HOPE SUMMERS



	3
	3
	6
	5

**HOPE SUMMERS**

### EMBRACING DESTINY (x3)

Discard 1 card to the bottom of your deck to clear the Threat card in your Location. If this is the first Embracing Destiny card in the Storyline, discard 2 cards instead.

### DENYING

The next Master Plan card is played facedown in the Storyline with no effect. Then, remove the top card of the Master Plan deck from play and flip this card facedown.

PHOENIX FIVE

SEASON 2

## HUMAN TORCH



	3
	3
	5
	7

**HUMAN TORCH**

### PYROGENESIS

*(STARTING HAND)*  
As long as this card is faceup in the Storyline, you can treat as .

### TEAMWORK

Perform actions of the same type as all Action tokens on the Fantastic Four card. Then, add 1 token from the pool to the Fantastic Four card.

### TEAMWORK

Perform actions of the same type as all Action tokens on the Fantastic Four card. Then, add 1 token from the pool to the Fantastic Four card.

### NOVA FLAME

Discard 1 card from your hand to the bottom of your deck to deal 2 damage to EVERYTHING else in your Location. Discard all there.

FANTASTIC FOUR

SEASON 2

## ICEMAN



	3
	5
	5
	5

**ICEMAN**

### CRYOKINESIS (x2)

Attach a Stunned token to a Villain or Henchman in your Location. Next Villain turn, their BAM! is canceled and the token is discarded.

### ORGANIC ICE BODY (x2)

You cannot take any damage until the beginning of your next turn.

GOLD TEAM

SEASON 2

## ICEMAN (FIRST CLASS)



	3
	2
	6
	7

**ICEMAN**

### FREEZE! (x2)

Attach a Frozen token to a Villain in your Location. Next Villain turn, that Villain cannot move and the token is discarded.

### ICE SLIDE (x2)

Place a Frozen token in your Location. Heroes may leave this Location without performing . At the beginning of your next turn, discard the token.

FIRST CLASS

SEASON 2



## GUARDIAN



**GUARDIAN**



**REAL NAME: James MacDonald Hudson**

James Hudson worked for the Am-Can Oil Corporation and developed a powered exoskeleton suit. When he found out it was to be used by the military, he stole his Guardian's Battle-suit's prototype and resigned. To avoid prosecution, Hudson made arrangements with the Canadian Parliament. The Minister of Defense named him head of operations for the Ministry's research and development program. Using the suit he formed a team of heroes, Alpha Flight, and eventually took the codename Guardian. Later, the suit would be fused with Hudson's biological and nervous systems, and he'd eventually become a cyborg, gaining all its powers – like supersonic flight, body armor, flares, ultrasound, and more – himself.

KICKSTARTER EXCLUSIVE

SEASON 2

## GAMBIT



**GAMBIT**



**REAL NAME: Remy LeBeau**

Thief, grifter, scoundrel – Remy LeBeau, the mutant better known as Gambit, has been called it all. After being exiled from his home in New Orleans, Gambit traveled the world seeking "business opportunities," making many contacts and even more enemies along the way. Though seemingly an odd fit, he found a permanent home as part of the X-Men, showing that beneath his devil-may-care attitude, Gambit possesses a true heart of gold.

BLUE TEAM

SEASON 2

## FORGE



**FORGE**



**REAL NAME: \*Unrevealed\***

Cheyenne tribe member and shaman pupil Forge – real name unknown – had a mutant ability for invention and mystical powers. While working for the Defense Department, Forge designed a weapon that would neutralize superhuman powers. Unbeknownst to him, they wanted to use it against mutants. The device stripped Storm of her abilities, bringing out Forge's guilt. He rescued her and they fell in love. He joined the X-Men as a powerful team member and helped them in many ways.

GOLD TEAM

SEASON 2

## HOPE SUMMERS



**HOPE SUMMERS**



**REAL NAME: Hope Summers**

Mutant Messiah Hope Summers was the firstborn with powers after M-Day. After she was hunted by many different groups, Cable found her and whisked her off to a different time for her protection. Her powers allowed her to imitate those of any mutant or superhero making her an Omega-level mutant. Often at the center of conflict due to her prophecy, she was trained to fight and helped the X-Men and other groups, including the Mutant Liberation Front and The Five.

PHOENIX FIVE

SEASON 2

## HAVOK



**HAVOK**



**REAL NAME: Alexander "Alex" Summers**

Alex was Scott Summers's younger brother, but they were separated when their parents died. Alex ended up in an orphanage secretly run by the evil Mister Sinister who waited until his mutant powers manifested. Havok was able to release plasma energy from his body in a powerful force, but his memory was wiped. He didn't know about his powers until evil Professor Abdol released them. Reunited with Cyclops, he joined the X-Men and later led X-Factor. After a friend's death, he teamed up with Dark Beast and created the Brotherhood of Mutants, a terrorist group. It was a ruse to overthrow Dark Beast and he rejoined the X-Men.

KICKSTARTER EXCLUSIVE

SEASON 2

## GWENPOOL



**GWENPOOL**



**REAL NAME: Gwendolyn Poole**

Gwen Poole originally lived in a universe like Earth, where Super Heroes were fictional beings. Though never revealed how, Gwen found herself in the Prime Marvel Universe. Ronnie, the tailor, mistakenly read Gwen's name as "Gwenpool," which became her alias. She worked as a mercenary, getting contract jobs from Ronnie. She was forced through a portal to a pocket universe that recreated her old life. This universe was also "fictional," existing within the medium of comics. Gwen developed the ability to interact with the elements of the comics, like title cards and panel borders. She eventually went beyond the panels and reached the Gutter Space and returned to the Marvel Universe.

KICKSTARTER EXCLUSIVE

SEASON 2

## ICEMAN (FIRST CLASS)



**ICEMAN**



**REAL NAME: Robert "Bobby" Louis Drake**

After Bobby Drake discovered his powers by accidentally freezing a bully in ice, Professor Xavier sent Cyclops to rescue him from jail. He didn't trust Summers at first, but left with him when a mob attempted to kill him and became the X-Men's second member. Though self-conscious about being the youngest member of the team, he trained just as hard in the school's Danger Room. He learned how to wield his icy powers and fought many battles alongside the X-Men.

FIRST CLASS

SEASON 2

## ICEMAN



**ICEMAN**



**REAL NAME: Robert "Bobby" Louis Drake**

Bobby Drake grew up hiding his powers until a fight manifested them publicly, turning an opponent into ice, scaring everyone. After rescuing him, Iceman was recruited by Professor X to attend his elite school. With the ability to drop his core temperature enough to turn into ice, among other mutations, he used his thermokinesis in the fight to unite humans and mutants with the X-Men and later with X-Force, finally returning to the X-Men.

GOLD TEAM

SEASON 2

## HUMAN TORCH



**HUMAN TORCH**



**REAL NAME: Jonathan Storm**

Johnny Storm was a high school student and amateur mechanic from Long Island before he was exposed to high levels of cosmic radiation. This occurred when his sister's boyfriend, Dr. Reed Richards, took him, his sister Sue, and pilot Ben Grimm, on an unauthorized trip to space in the stolen rocket Marvel-1. The radiation mutated all of them, but Johnny's specific mutation turned his entire body into a fiery, plasma-like state. From then on, he became the Human Torch. The group teamed up and became the Fantastic Four, exploring space, time and alternate dimensions while saving the world and larger galaxy along the way.

FANTASTIC FOUR

SEASON 2



## INVISIBLE WOMAN



INVISIBLE WOMAN

### INVISIBILITY

**[STARTING HAND]**  
As long as this card is faceup in the Storyline, when the top card of the Master Plan deck is revealed, you may choose not to take any damage until the beginning of your next turn. If you do so, next turn play your card facedown.

### TEAMWORK

Perform actions of the same type as all Action tokens on the Fantastic Four card. Then, add 1 token from the pool to the Fantastic Four card.

### TEAMWORK

Perform actions of the same type as all Action tokens on the Fantastic Four card. Then, add 1 token from the pool to the Fantastic Four card.

### PSIONIC FORCE FIELDS

Gain 2 tokens.

FANTASTIC FOUR

SEASON 2

## JEAN GREY



JEAN GREY

### MAJOR TELEKINESIS (x2)

split as you like in your and adjacent Locations.

### TELEPATHY (x2)

Swap the previous Hero card in the Storyline with any other Hero card in the Storyline.

CORE SET

SEASON 2

## JUBILEE



JUBILEE

### EXPLOSIVE LIGHT BLASTS (x2)

against up to 3 different targets in your Location.

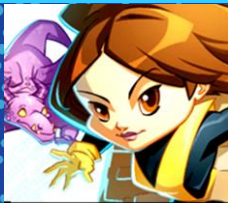
### PSIONIC SHIELDS (x2)

Ignore the direct effects of the next Villain BAM! that would affect you (it can still affect other Heroes).

BLUE TEAM

SEASON 2

## KITTY PRYDE



KITTY PRYDE

### LOCKHEED, GO!

**[STARTING HAND]**  
Put Lockheed in play in your Location or an adjacent one. As long as this card is faceup in the Storyline, you may use your to move Lockheed instead.

### LOCKHEED FIRE BREATH (x3)

in Lockheed's Location.

### PHASING (x2)

You cannot take any damage until the beginning of your next turn. For each damage avoided, gain 1 token.

### PHASING OTHERS (x2)

You can move another Hero with you this turn. Other Heroes in your Location cannot take damage until your next turn.

### GET THEM, LOCKHEED

in Lockheed's Location.

### HELP THEM, LOCKHEED

in Lockheed's Location.

KICKSTARTER EXCLUSIVE

SEASON 2

## LADY DEADPOOL



LADY DEADPOOL

### MASTER ASSASSIN (x2)

against single target.

### TOTALLY UNPREDICTABLE (x2)

Gain 1 token but play next card randomly.

### MERC WITH A MOUTH WITH LIPGLOSS (x2)

Rescue 1 in your Location.

### RESCUE CHARLES (x2)

Move to any Location with .

If you do, rescue 1 and defeat all there.

### REGENERATIVE HEALING FACTOR

**[STARTING HAND]**

As long as this card is faceup in the Storyline, if you have less than 3 cards in hand at the end of a Villain turn, you may draw 1 card.

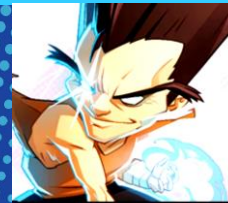
### RESISTANCE TO EVERYTHING

Deadpool ignores any special effects on next master plan card.

DEADPOOL

SEASON 2

## LEGION



LEGION

**BLEEDING IMAGE** Take 1 damage. Deal 2 damage to everything else in your Location. Discard all .

**CHAIN** Use your and in Locations with Heroes. If you do, those Heroes discard 1 Action token each if possible.

**CINDY** in an adjacent Location. Each Hero their takes 1 damage.

**DEPICH** Look at the top Master Plan card. You may place it at the bottom. Each other Hero in your Location takes 1 damage.

**HYPNOBLOCKE** Delay the next Villain turn by 1 card. Heroes must play their card randomly until the next Villain turn.

**JACK WAYNE** Heroes may freely exchange Action tokens.

**SALLY** Each other Hero in your Location takes 1 damage. You cannot take any damage until the beginning of your next turn.

**SUSAN IN SUNSHINE** Each other Hero, Villain, and Henchman in your Location takes double damage until your next turn.

**TYRRANIX** You may move any Heroes to any Locations. Moved Heroes discard 1 card from their hand to the bottom of their deck.

**ZERO G, PRIESTLY** Any Special Effect of the next Master Plan card is canceled. If this card is faceup in Storyline, heroes keep hands revealed.

KICKSTARTER EXCLUSIVE

SEASON 2

## LOGAN



LOGAN

### WITHSTANDING THE PAIN

**[STARTING HAND]**

As long as this card is faceup in the Storyline, you may ignore 1 damage during each Villain turn.

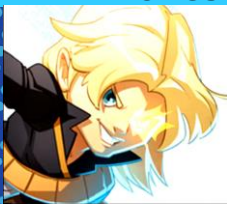
### FIGHTING EXPERIENCE (x3)

Draw 1 card.

DAYS OF FUTURE PAST

SEASON 2

## LONGSHOT



LONGSHOT

### PROBABILITY

### MANIPULATION (x2)

Look at the top 3 cards of the Master Plan deck. Then, place them back on top in any order.

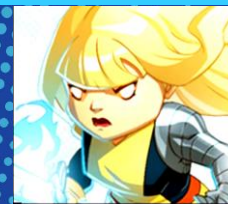
### HEALING FACTOR (x2)

You may draw cards until you have 3 in your hand.

KICKSTARTER EXCLUSIVE

SEASON 2

## MAGIK



MAGIK

### MYSTICAL ARMOR

**[STARTING HAND]**

As long as this card is faceup in the Storyline, if you have any Crisis tokens at the end of a Villain turn, you may discard 1 (with no consequences).

### SOULSWORD (x2)

Deal 1 extra damage to any Villain, Henchman, or you deal any damage to this turn.

### STEPPING DISKS (x2)

Move to any Location.

KICKSTARTER EXCLUSIVE

SEASON 2



### JUBILEE



	3
	6
	2
	6

**JUBILEE**

**REAL NAME: Jubilation Lee**

A young mutant orphan whose explosive light powers manifested while she was seeking shelter at a mall, Jubilee encountered the heroic X-Men by accident. She was invited with open arms to start a new life at the Xavier Institute, where her upbeat personality allowed her to quickly befriend the team, particularly the normally gruff Wolverine. Though not as experienced as many of the other X-Men, Jubilee has proven herself to be a formidable and quick-thinking combatant.

BLUE TEAM

SEASON 2

### JEAN GREY



	5
	5
	3
	5

**JEAN GREY**

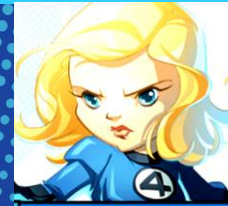
**REAL NAME: Jean Grey**

A powerful telepath and telekinetic, Jean Grey was tutored from a young age by Charles Xavier, who taught the fledgling mutant to control her developing abilities. As she gained greater skill directing her mental energies, Jean joined the X-Men as one of its founding members, becoming a cornerstone of the team.

CORE SET

SEASON 2

### INVISIBLE WOMAN



	4
	6
	3
	4

**INVISIBLE WOMAN**

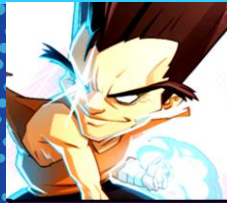
**REAL NAME: Dr. Susan Richards**

Sue Storm, aka the Invisible Woman, was a college student from Long Island before she was exposed to high levels of cosmic radiation on an unauthorized trip to space in the stolen Marvel-1 rocket. The radiation gave her, her boyfriend, Dr. Reed Richards, her younger brother, Johnny Storm, and friend Ben Grimm, superhuman abilities. Her superhuman power allowed her to become invisible and to create forcefields. After this mishap, the group became the Fantastic Four, exploring space, time and alternate dimensions while saving the world and larger galaxy along the way.

FANTASTIC FOUR

SEASON 2

### LEGION



	3
	5
	3
	4

**LEGION**

**REAL NAME: David Haller**

Omega-level mutant David Haller's abilities manifested in a terrorist attack ending with the terrorists' minds being incinerated, leaving Heller with dissociative identity disorder. One of the personalities was the melded mind of the terrorist leader Jemal Karami. Karami was able to use Haller's telepathic abilities against him by introducing his split personalities back to him, taking away much of his control. When Xavier discovered Legion was actually his son, he worked to free him from the personalities, each of whom had their own set of powers.

KICKSTARTER EXCLUSIVE

SEASON 2

### LADY DEADPOOL



	3
	3
	4
	3

**LADY DEADPOOL**

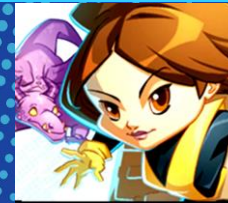
**REAL NAME: Wanda Wilson**

Deadpool's Lady counterpart possessed his regenerative healing powers, superhuman stamina, agility, and reflexes, and came from Earth-3010. Wanda Wilson rebelled against a group of fascists who were taking over the government. Leader of the loyalists was General America and Deadpool showed up to help her defeat him. Going back and forth between her world and his, she spent time in the Deadpool Corps, but eventually decided to head back home and remain there.

DEADPOOL

SEASON 2

### KITTY PRYDE



	3
	4
	2
	6

**KITTY PRYDE**

**REAL NAME: Katherine "Kitty" Pryde**

Genius Kitty Pryde was experiencing frequent headaches as her mutant power manifested. When it was revealed she could phase through solid objects, both Charles Xavier and Emma Frost pursued her for their schools. Though she initially went to Frost, Phoenix was able to use her telepathy to convince Kitty's parents to send her to Xavier's School for the Gifted instead. She joined the X-Men and eventually formed the Excalibur team in England. S.H.I.E.L.D. recruited her, too! When Excalibur disbanded, she returned to help the X-Men.

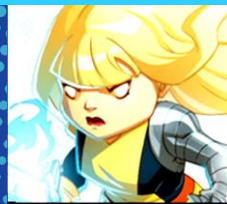
**LOCKHEED**

Lockheed was from a highly-intelligent extraterrestrial race that resembled dragons. He possessed the power of natural flight, was able to breath fire, and could understand any language. Using astral ships, his race navigated Space fighting the alien Brood species. After meeting and saving Kitty Pryde, who'd ironically invented a story about a character almost exactly like him, the purple creature became Lockheed, her constant companion, and went with her to Earth. He protected her and saved her many times, accompanying her in her battles.

KICKSTARTER EXCLUSIVE

SEASON 2

### MAGIK



	3
	2
	9
	4

**MAGIK**

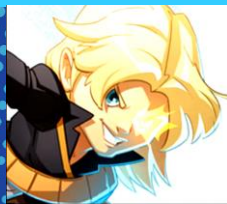
**REAL NAME: Illyana Rasputin**

Born in Russia, Illyana Rasputin was the sibling of mutants Colossus and Mikhail Rasputin. Illyana was reunited with Colossus during a kidnapping and followed him to the X-Mansion. The evil sorcerer Belasco kidnapped her and took her to a demon dimension, turning her into a sorceress. Around the same time, she discovered her mutant teleportation powers. After manifesting the Soulsword, she defeated Belasco and banished him from the demon realm. Throughout her life she balanced the two roles and became a member of the New Mutants and later the X-Men, helping in many of their battles.

KICKSTARTER EXCLUSIVE

SEASON 2

### LONGSHOT



	5
	3
	3
	6

**LONGSHOT**

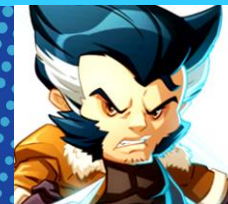
**REAL NAME: \*Unrevealed\***

Hailing from Mojoworld, Longshot was an artificial humanoid lifeform. Designed as a slave of the Spineless Ones, his creator Arize gave him and other slaves freewill and consciousness. Some, like him, were given superhuman abilities. After an uprising against the leader Mojo, he escaped to Earth and became Longshot, a nod at his luck for survival. Found by the X-Men, he accompanied them on many adventures. He continued to fight Mojo throughout his life.

KICKSTARTER EXCLUSIVE

SEASON 2

### LOGAN



	3
	3
	7
	4

**LOGAN**

**REAL NAME: James Howlett**

After the Mutant Control Act was passed, allowing Sentinels to protect humans, many mutants were killed or imprisoned. Uncaptured, Logan fought in the resistance and helped fellow jailed X-Men by smuggling needed parts to Kitty Pryde, allowing her to build her device and succeed in freeing herself and others. However, all but two were killed in their attempts to fight off Sentinels. Wolverine was destroyed leaving only his Adamantium skeleton behind.

DAYS OF FUTURE PAST

SEASON 2



## MAGNETO



	4
	1
	6
	3

**MAGNETO**

### GENIUS INTELLIGENCE

This turn, you can treat as .

### PRODIGAL INTELLIGENCE

This turn, you can treat all symbols as .

### MAGNETOKINESIS (x2)

split as you like in your and adjacent Locations.

CORE SET

SEASON 2

## MARROW



	3
	3
	4
	6

**MARROW**

### DUAL HEARTS

(STARTING HAND)  
If this card is faceup in the Storyline and you're about to be KO'd, instead of discarding your last card, you can flip this card facedown to draw 1 card.

### BONE WEAPONS (x2)

split as you like in your and adjacent Locations.

### BONE ARMOR

As long as this card is faceup in the Storyline, if a Villain or Henchman in your Location deals damage to you during a Villain turn, they take 1 damage at the end of that turn.

KICKSTARTER EXCLUSIVE

SEASON 2

## MARVEL GIRL (FIRST CLASS)



	4
	5
	4
	4

**MARVEL GIRL**

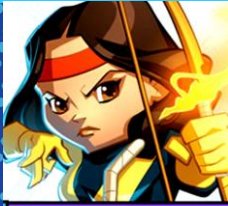
### TELEKINESIS (x4)

or in your or an adjacent Location.

FIRST CLASS

SEASON 2

## MIRAGE



	5
	5
	4
	2

**MIRAGE**

### NEURAL ARROW (x2)

This turn, you can use your actions in adjacent Locations.

### EMPATHIC ILLUSION (x2)

Relocate any number of , , and Threat cards between your and adjacent Locations.

### RESIST DEATH (x2)

Until the beginning of your next turn, all Heroes in your Location cannot be forced to discard their last card.

KICKSTARTER EXCLUSIVE

SEASON 2

## MR. FANTASTIC



	5
	7
	3
	3

**MR. FANTASTIC**

### PLASTICITY

(STARTING HAND)  
As long as this card is faceup in the Storyline, during your Hero turn, you use 1 of your or actions in an adjacent Location.

### TEAMWORK

Perform actions of the same type as all Action tokens on the Fantastic Four card. Then, add 1 token from the pool to the Fantastic Four card.

### TEAMWORK

Perform actions of the same type as all Action tokens on the Fantastic Four card. Then, add 1 token from the pool to the Fantastic Four card.

### SUPER GENIUS

This turn, you can treat all symbols as .

FANTASTIC FOUR

SEASON 2

## MULTIPLE MAN



	4
	4
	4
	9

**MULTIPLE MAN**

### KINETIC MANIPULATION

(STARTING HAND)  
As long as this card is faceup in the Storyline, once per turn, you may place 1 Dupe token in your Location (functions as a ). You may use and actions as if you were in any Dupe's Location.

### DUPLICATION ABSORPTION (x4)

Remove as many Dupe tokens from your Location as you wish. Draw 1 card for each token removed.

### SPREADING DUPES (x4)

Move up to 2 Dupe tokens to Locations adjacent to them.

### DUPES, ASSEMBLE!

Each Dupe may perform 1 free or . Then remove each activated Dupe token.

KICKSTARTER EXCLUSIVE

SEASON 2

## MYSTIQUE



	3
	2
	7
	5

**MYSTIQUE**

### SPYMASTER (x2)

The next Master Plan card played cannot add or to your Location or one of the two adjacent ones (you choose).

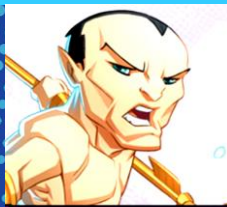
### METAMORPH (x2)

(STARTING HAND)  
On the next Villain turn, you may redirect any damage dealt to you to a Henchman or any in your Location.

CORE SET

SEASON 2

## NAMOR



	3
	3
	7
	4

**NAMOR**

### AVENGING SON OF

### ATLANTIS (x2)

in any Location.

### KING OF ATLANTIS (x2)

You may discard either 1 or 1 from your Location and from each adjacent Location.

KICKSTARTER EXCLUSIVE

SEASON 2

## NIGHTCRAWLER



	3
	6
	6
	0

**NIGHTCRAWLER**

### \*BAMFI\* ANYBODY NEED A LIFT? (x4)

You MUST move to any other Location. You may bring another Hero in your Location with you.

### \*BAMFI\* EN GARDE (x4)

You MUST move to any other Location.

### \*BAMFI\* AUF WIEDERSEHEN

You MUST move to any other Location.

### \*BAMFI\* FEAR NO EVIL

You MUST move to any other Location.

KICKSTARTER EXCLUSIVE

SEASON 2



## MARVEL GIRL (FIRST CLASS)



**MARVEL GIRL**



**REAL NAME:** Jean Grey

Before she was the Phoenix, Jean Grey was a lonely girl unable to control her powerful telepathic abilities. The Professor mentored her and taught her how to hone her telekinetic powers as well, years before she attended the School for Gifted Youngsters. Once she finally agreed to join him, Xavier called her Marvel Girl and she was the fifth team member on the X-Men. As the only female, she spent time with Invisible Girl on the Fantastic Four. Her impressive abilities were indispensable to the X-Men.

FIRST CLASS

SEASON 2

## MARROW



**MARROW**



**REAL NAME:** Sarah

Sarah's mutation allows her to control the growth and shape of her bone structure, using her bone protrusions as extra protection, melee weapons, and even projectiles. She was originally part of the underground-dwelling Morlocks, led by Callisto. When she gained full control of her powers, she joined the Gene Nation terrorist group, punishing humans for their hatred towards mutants. Clashing against the X-Men, Marrow had her heart torn out by Storm, though, having two hearts, she survived. She was later recruited into the Weapon X program, only to betray the organization and lead a series of attacks against them. Eventually, Cable got her to join his X-Force black ops team.

KICKSTARTER EXCLUSIVE

SEASON 2

## MAGNETO



**MAGNETO**



**REAL NAME:** Erik Magnus Lehnsherr

Erik Lehnsherr, an Auschwitz survivor, first met Charles Xavier when the two were young men. The two new friends shared many debates about mutantkind's place in the world. Fearing the judgment and hatred that he foresaw humanity bringing to bear against mutants, Erik ultimately abandoned Xavier, believing the professor's more pacifist views to be incompatible with his own. Erik became Magento: master of magnetism, archnemesis of the X-Men, and founder of the Brotherhood of Evil Mutants, a radical group dedicated to the "protection" of mutants using violence and other extremist means.

CORE SET

SEASON 2

## MULTIPLE MAN



**MULTIPLE MAN**



**REAL NAME:** James Arthur "Jamie" Madrox  
Able to duplicate himself at birth, Jamie Madrox unknowingly wore a suit that stopped his mutation from happening. His parents died before telling him about this mutation. After the suit malfunctioned, releasing his powers, Xavier found him. With his suit repaired, he went to Muir Island as a lab assistant and learned about his powers. He joined X-Factor, helping them by using his duplicating abilities.

KICKSTARTER EXCLUSIVE

SEASON 2

## MR. FANTASTIC



**MR. FANTASTIC**



**REAL NAME:** Dr. Reed Richards

Reed Richards is a brilliant scientist and came from a family of super-intelligent people. He is often considered to be the smartest man on earth. Richards was exposed to high levels of cosmic radiation during a trip to space in the rocket, Marvel-1, that he and his friends stole. His best friend Ben Grimm, girlfriend Sue Storm and her younger brother Johnny Storm, were also exposed to the radiation, giving them all superhuman abilities. For Richards, this gave him the power to stretch and mold his body, becoming Mister Fantastic. The group was dubbed the Fantastic Four, exploring space, time and alternate dimensions while saving the world and larger galaxy along the way.

FANTASTIC FOUR

SEASON 2

## MIRAGE



**MIRAGE**



**REAL NAME:** Danielle Moonstar

Danielle 'Dani' Moonstar, a Native American of the Cheyenne Nation, discovered her emerging mutant powers at puberty. Unable to control her ability to create visible images of people's greatest fears, she was shunned by nearly everyone, except her parents, and her grandfather, the chief and shaman Black Eagle. Raised by Black Eagle after her parents' disappearance, he contacted Professor Charles Xavier asking him to provide Dani with the training she needed to utilize her powers (which would include telepathy, empathic illusion casting, and enhanced durability). She would eventually become a member of Xavier's new team, the New Mutants - where she would be codenamed Mirage.

KICKSTARTER EXCLUSIVE

SEASON 2

## NIGHTCRAWLER



**NIGHTCRAWLER**



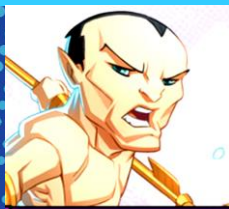
**REAL NAME:** Kurt Wagner

The son of Mystique, who abandoned him at birth, Kurt Wagner was rescued by his powerful father Azazel and raised by the sorcerous Margali Szardos in a circus. He claimed that his unnatural blue skin, tail, fangs and pointed ears were a costume in order to fit in. He was a skilled acrobat, fighter, and teleporter. After injuring a friend unintentionally, causing those around him to think he was a demon, Professor X saved him and invited him to join the X-Men who he stayed with for many years.

KICKSTARTER EXCLUSIVE

SEASON 2

## NAMOR



**NAMOR**



**REAL NAME:** Namor McKenzie

Half-human, half-Atlantean, Prince Namor assisted many groups including the X-Men, the Defenders, and the Avengers. Able to control others with his telepathy, he could also command sea life, and he has the ability to fly. His powers strengthened when he was in water. He teamed up with evil Doctor Doom to create the Cabal, later betraying it and creating one that aided people instead. But in the end, he went back to the X-Men, sharing Atlantis with them.

KICKSTARTER EXCLUSIVE

SEASON 2

## MYSTIQUE



**MYSTIQUE**



**REAL NAME:** Raven Darkholme

Abandoned at an early age after her shapeshifting mutation revealed itself, Raven Darkholme fended for herself. Able to psionically alter her cells at will, she had the power to exactly duplicate any living creature, though she couldn't take on their powers. A strong believer in preserving mutants, she vacillated between helping humans and fighting them, often engaging in criminal activity. As a member of Magneto's Brotherhood of Evil Mutants and later a leader of it, she fought many groups, including the X-Men.

CORE SET

SEASON 2



## NORTHSTAR



3  
 3  
 4  
 7

**NORTHSTAR**

### FLIGHT

[STARTING HAND]

As long as this card is faceup in the Storyline, when you perform actions, you may bring another Hero in your Location with you.

### CONCUSSIVE BLASTS (x2)

split as you like in your and adjacent Locations.

### ALPHA FLIGHT

Gain 1 token for each faceup Alpha Flight card in the Storyline.

KICKSTARTER EXCLUSIVE

SEASON 2

## OLD MAN LOGAN



4  
 5  
 0  
 7

**OLD MAN LOGAN**

### RETIRED

[STARTING HAND]

Gain 2 tokens. As long as this card is faceup in the Storyline, you can't use tokens to Attack.

### TIRED OF FIGHTING (x4)

If Retired is faceup in the Storyline, gain 1 token. Until the beginning of your next turn, you may ignore 1 damage each Villain turn.

### MY NAME IS WOLVERINE!

[BOTTOM OF HAND]

Gain 4 tokens. If Retired is faceup in the Storyline, turn it facedown.

KICKSTARTER EXCLUSIVE

SEASON 2

## PHOENIX



7  
 0  
 0  
 0

**PHOENIX**

### UNCANNY POWER

[STARTING HAND]

As long as this card is faceup in the Storyline, other Heroes must ignore and skip Phoenix cards in the Storyline.

### PHOENIX FORCE AVATAR (x2)

### PHOENIX CRY

Then discard all cards from your hand to the bottom of your deck.

### EMPATHY (x2)

Give 1 token from the pool to another Hero.

### TIME MANIPULATION

Delay the next Villain turn by 1 card.

KICKSTARTER EXCLUSIVE

SEASON 2

## PIXIE



3  
 6  
 2  
 6

**PIXIE**

### HALLUCINATORY DUST (x2)

Attach a Stunned token to a Villain or Henchman in your Location. Next Villain turn, their BAM! is canceled and the token is discarded.

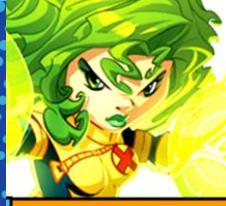
### TELEPORTING SPELL (x2)

You and all other Heroes in your Location MUST move together to any other Location.

KICKSTARTER EXCLUSIVE

SEASON 2

## POLARIS



3  
 4  
 4  
 5

**POLARIS**

### MAGNETIC FIELD (x2)

You cannot take any damage until the beginning of your next turn.

### MAGNETIC MANIPULATION (x2)

in your or an adjacent Location.

KICKSTARTER EXCLUSIVE

SEASON 2

## PROFESSOR X



4  
 5  
 4  
 4

**PROFESSOR X**

### GENIUS INTELLIGENCE

This turn, you can treat as .

### GENIUS INTELLIGENCE

This turn, you can treat as .

### LEADERSHIP

Give from the pool to another Hero.

### LEADERSHIP

Give from the pool to another Hero.

### TELEPATHY

Choose another Hero: They can swap any number of cards from their hand with their cards in the Storyline.

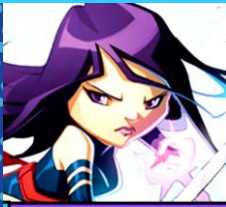
### MIND ALTERATION

Turn up to 2 at your Location into .

CORE SET

SEASON 2

## PSYLOCKE



3  
 3  
 5  
 6

**PSYLOCKE**

### PSIONIC BLAST (x2)

Attach a Stunned token to a Villain or Henchman in your Location. Next Villain turn, their BAM! is canceled and the token is discarded.

### TELEPATHY (x2)

Swap the previous Hero card in the Storyline with any other Hero card in the Storyline.

BLUE TEAM

SEASON 2

## PUCK



4  
 4  
 6  
 3

**PUCK**

### COMPRESSED RUBBER PHYSIOLOGY

[STARTING HAND]

As long as this card is faceup in the Storyline, you may ignore 1 damage dealt by a Henchman each Villain turn.

### TACTICAL INTELLIGENCE

Swap the Threat in your Location with one in an adjacent Location.

### ALPHA FLIGHT

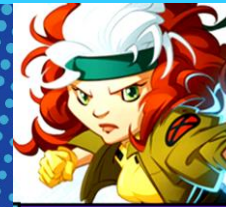
Gain 1 or 1 token for each faceup Alpha Flight card in the Storyline.

### ACROBATIC FIGHTING STYLE

KICKSTARTER EXCLUSIVE

SEASON 2

## ROGUE



4  
 4  
 4  
 3

**ROGUE**

### POWER ABSORPTION (x2)

Use the Action symbols at the bottom of another Hero's faceup card in the Storyline. At the end of your turn, turn that card facedown.

### ABILITY ABSORPTION (x2)

Use the Special Effect of another Hero's faceup card in the Storyline. At the end of your turn, turn that card facedown.

BLUE TEAM

SEASON 2



## PHOENIX



**PHOENIX**

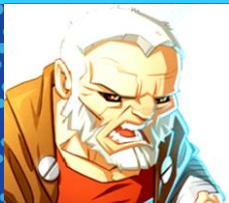
**REAL NAME: Rachel Summers**

Daughter of alternate timeline Jean Grey and Scott Summers, Rachel Summers possessed her mother's Phoenix Force, telepathic powers, and telekinetic powers. After the Mutant Registration Act, she was sent to a containment facility where she met Franklin Richards and joined the X-Men. Her time-travel abilities stripped her of the Phoenix Force but she was able to manipulate time and gain it back.

KICKSTARTER EXCLUSIVE

SEASON 2

## OLD MAN LOGAN



**OLD MAN LOGAN**

**REAL NAME: James "Logan" Howlett**

In an alternate universe in a world run by Super Villains, retired Old Man Logan just wanted to live out his life peacefully. Needing rent money, he accepted to help with a delivery. When the package contained Super-Soldier Serum, S.H.I.E.L.D revealed themselves and killed him. Immortal, Logan killed Red Skull and his cohorts, who'd taken him. When he learned the Hulk Gang had decimated his family, he killed some of Banner's. Banner just wanted to fight his boredom. So, he killed Logan and ate him, but Logan burst out of the Hulk's stomach.

KICKSTARTER EXCLUSIVE

SEASON 2

## NORTHSTAR



**NORTHSTAR**

**REAL NAME: Jean-Paul Beaubier**

Jean-Paul Beaubier was an Olympic skiing champion with superhuman powers like photokinesis, heightened reflexes and superhuman speed. Famous as a sports star, he was contacted by James Hudson, head of Department H, and persuaded to join. He became a member of their Alpha Flight and was codenamed Northstar. Here he met the twin sister he never knew he had, Jeanne-Marie. He left Alpha Flight after a fight with her, but would rejoin them later and remain a member while the team existed. He'd eventually aid the X-Men in battle, and join Department X.

KICKSTARTER EXCLUSIVE

SEASON 2

## PROFESSOR X



**PROFESSOR X**

**REAL NAME: Charles Francis Xavier**

Perhaps the most influential figure in the history of mutantkind, Professor Charles Xavier is the founder and head of the X-Men. As a young man, Xavier learned that his vast telepathic abilities allowed him to control, influence, and see everything in a person's mind. Fearing the rise of militant mutants like his onetime friend Magneto, Xavier dedicated himself to a dream of peaceful coexistence between humans and mutants. With the foundation of the Xavier Institute for Higher Learning, the visionary Professor X has educated many young students – among them the future members of the X-Men!

CORE SET

SEASON 2

## POLARIS



**POLARIS**

**REALNAME: Lorna Dane**

The illegitimate daughter of Magneto, Lorna Dane possessed many of Magneto's strong powers. She fought to unite mutants and humans with the X-Men as Polaris. Unfortunately, she was often mentally afflicted by her powers. At one point she developed a mutation that made her enraged and those around her experienced it within themselves. Despite these setbacks, she continued to fight for good and joined X-Factor as a leader.

KICKSTARTER EXCLUSIVE

SEASON 2

## PIXIE



**PIXIE**

**REAL NAME: Megan Gwynn**

Megan Gwynn, known as Pixie, possesses mutant powers that revealed themselves during a road accident; she could manifest rainbow-colored butterfly wings, allowing her to fly! Other powers revealed themselves in battles against demons, where she incapacitated them using "pixie dust." Pixie was one of the young X-Men captured by the Avengers and sent to the Avengers Academy. Eventually, she made her way to, and graduated from, the Jean Grey School for Higher Learning and became an official X-Man.

KICKSTARTER EXCLUSIVE

SEASON 2

## ROGUE



**ROGUE**

**REAL NAME: Anna Marie**

The charismatic Southern belle known as Rogue was not always the outgoing X-Man she is today. As a young woman, her dormant mutant power to absorb others' life essences through skin-to-skin contact suddenly manifested, inadvertently transforming an otherwise innocent kiss into a near-fatal disaster. Traumatized, Rogue fled from her onetime home, drifting through life confused and frightened. Having nearly turned to a life of crime and terrorism, Rogue ultimately found peace and purpose at the Xavier Institute.

BLUE TEAM

SEASON 2

## PUCK



**PUCK**

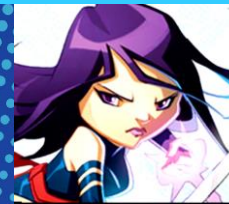
**REAL NAME: Eugene Milton Judd**

Eugene was born in 1914. When he was eight years old, he caught a bear which kept his family warm and fed through the winter. It was then he swore to live "an interesting life." He became a mercenary seeking the Black Blade of Baghdad. Upon claiming it, he was attacked by Black Raazer, a being that possessed the blade. The spirit of Black Raazer lengthened Judd's lifespan and increased his strength. Judd traveled the world and eventually, calling himself Puck, would join a team of other paranormal mercenaries, the Outcasts. Puck was ultimately imprisoned for murder. Years later, Guardian would seek Puck's prison release and recruit him to the newly government-independent Alpha Flight.

KICKSTARTER EXCLUSIVE

SEASON 2

## PSYLOCKE



**PSYLOCKE**

**REAL NAME: Betsy Braddock**

Twin of Brian Braddock, who would become Captain Britain, Betsy possessed telekinetic and precognitive powers. After her powers manifested, she joined S.T.R.I.K.E. She was kidnapped by Mojo on a mission and he turned her into Psylocke. He implanted in her cybernetic eyes which recorded everything she did. After many manipulations, she returned to the X-Men under Storm's leadership.

BLUE TEAM

SEASON 2



### SASQUATCH



	3
	3
	5
	4

**SASQUATCH**

#### CONTROLLED FURY (x2)

against up to 2 different targets in your Location.

#### CLAWS

against a single target in your Location.

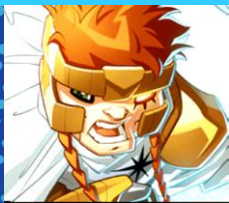
#### ALPHA FLIGHT

Gain 1 token for each faceup Alpha Flight card in the Storyline.

KICKSTARTER EXCLUSIVE

SEASON 2

### SHATTERSTAR



	3
	5
	2
	7

**SHATTERSTAR**

#### VIBRATORY SHOCKWAVES (x2)

You may discard 1 card from your hand to the bottom of your deck to split as you like in your and adjacent Locations

#### HEALING FACTOR (x2)

You may draw cards until you have 3 in your hand.

X-FORCE

SEASON 2

### SILVER SURFER



	8
	2
	2
	3

**SILVER SURFER**

#### COSMIC AWARENESS

(STARTING HAND)

As long as this card is faceup in the Storyline, during your turn, 1 of your or actions can be performed in any Locations.

#### NEAR IMMORTALITY

As long as this card is faceup in the Storyline, you draw 2 cards during the Draw step of your turn.

#### DIMENSIONAL TRAVEL

If you are not in the Villain's starting Location, replace your Location with any other not in play (move everything from your Location to the new one).

#### TELEPORT (x2)

You may move to any Location.

FANTASTIC FOUR

SEASON 2

### SNOWBIRD



	3
	5
	3
	6

**SNOWBIRD**

#### MAGICAL RESISTANCE

(STARTING HAND)

As long as this card is faceup in the Storyline, you can't be forced to play cards randomly.

#### POSTCOGNITION

As long as this card is faceup in the Storyline, gain 1 token whenever 1 of your cards in the Storyline is turned facedown.

#### ALPHA FLIGHT

Gain 1 or 1 token for each faceup Alpha Flight card in the Storyline.

#### ANIMAL SHAPESHIFTING



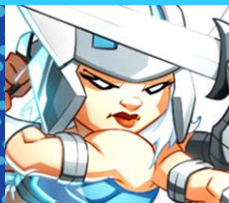
#### ANIMAL SHAPESHIFTING



KICKSTARTER EXCLUSIVE

SEASON 2

### SPIRAL



	3
	4
	4
	6

**SPIRAL**

#### TELEPORT AWAY

(STARTING HAND)

Gain 1 token. As long as this card is faceup in the Storyline, when the top card of the Master Plan deck is revealed, you may immediately discard 1 Action token to move all Heroes in your Location to any other Location.

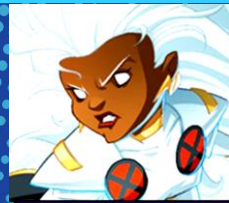
#### SPELL DANCE (x3)

For each Spell Dance card in the Storyline, choose 1: Draw 1 card, gain 1 token, or against a or Henchman in your Location.

KICKSTARTER EXCLUSIVE

SEASON 2

### STORM



	3
	3
	4
	7

**STORM**

#### ATMOKINESIS (x2)

in any Location.

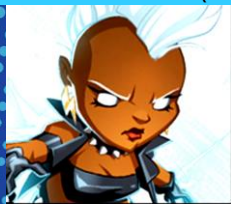
#### GODDESS OF WEATHER (x2)

Relocate any Heroes to different Locations.

CORE SET

SEASON 2

### STORM (MOHAWK)



	3
	4
	4
	6

**STORM**

#### INDOMITABLE WILL

(STARTING HAND)

As long as this card is faceup in the Storyline, ignore the first Crisis token you receive during each Hero or Villain turn.

#### PREEMPTIVE STRIKE (x3)

against up to 3 different targets in your Location.

KICKSTARTER EXCLUSIVE

SEASON 2

### STRONG GUY



	4
	2
	6
	4

**STRONG GUY**

#### KINETIC ENERGY

#### ABSORPTION (x4)

You cannot take any damage until the start of your next turn. For each damage you would take, gain 1 token instead. If this card is faceup in the Storyline and you have 4 or more Action tokens, discard all your Action tokens and your hand.

KICKSTARTER EXCLUSIVE

SEASON 2

### SUNFIRE



	3
	2
	3
	5

**SUNFIRE**

#### SOLAR FIRE (x2)

Deal 1 damage to EVERYTHING in an adjacent Location and discard all there.

#### ABSORB SOLAR RADIATION (x2)

Gain 1 token for each Location with no and no .

KICKSTARTER EXCLUSIVE

SEASON 2



**SILVER SURFER****SILVER SURFER****REAL NAME: Norrin Radd**

Norrin grew up encouraged to seek knowledge and achievement as opposed to the hedonism which dominated Zenn-Lavian society. His life changed when he confronted the invader, Galactus, who wanted to consume Zenn-La. In order to save his planet, Radd offered to become Galactus' herald, seeking out new worlds for him to consume. Galactus then transformed Radd into a silver-skinned, cosmic-powered super-being – the Silver Surfer. His body is composed of a flexible, nearly indestructible, silvery material that makes him one of the strongest beings in the universe. The Silver Surfer treasures freedom above all else but has often sacrificed his liberty for the greater good.

FANTASTIC FOUR

SEASON 2

**SHATTERSTAR****SHATTERSTAR****REAL NAME: Gaveedra Seven**

Hailing from the planet Mojoworld, Shatterstar was a time-traveler and dimension-hopper. He was genetically altered with superhuman powers and learned advanced weaponry. Trained in combat as an arena gladiator, he became a warrior with the Cadre Alliance. The group led him to the X-Men in the time of X-Force. Convinced to join them, he fought in many battles by their side.

X-FORCE

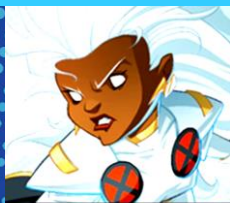
SEASON 2

**SASQUATCH****SASQUATCH****REAL NAME: Dr. Walter Langkowski**

Dr. Langkowski was appointed to McGill University in Montreal, studying everything about the Hulk after learning he was a transformed Bruce Banner. Dr. Langkowski began working on a gamma radiation experiment to create a being like the Hulk. Bombarded by massive amounts of gamma radiation, he turned into a huge creature and went on a rampage until being found unconscious by Snowbird. Shaman and Snowbird helped Walter learn how to keep his personality and intelligence in his bestial form. He called himself Sasquatch and later became part of the Alpha Flight Space Program.

KICKSTARTER EXCLUSIVE

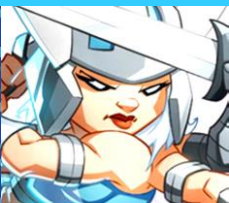
SEASON 2

**STORM****STORM****REAL NAME: Ororo Munroe**

Born in New York but raised in Egypt, Ororo Munroe lost her parents in a tragic military conflict, subsequently surviving as a pickpocket on the streets of Cairo. When her nascent mutant power to control the weather manifested, she was for a time worshipped as a goddess by the people of the Serengeti before being recruited by Professor X to join his squad of mutant Super Heroes. As part of the X-Men, Ororo became Storm, a pillar of the group and one of the most respected and tenured leaders in the team's long history.

CORE SET

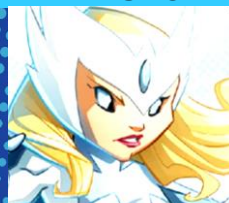
SEASON 2

**SPIRAL****SPIRAL****REAL NAME: Rita Wayword**

A created agent of Mojo, Spiral was one of his favorites. She was sent to capture Longshot who'd escaped to earth but ended up staying and joining the Freedom Force battling the Avengers, the X-Men, Firestar, and many more. She helped at the Body Shoppe, transforming Lady Deathstrike and others with the same genetic altering that was used on her. She eventually joined the X-Force team, led by Storm.

KICKSTARTER EXCLUSIVE

SEASON 2

**SNOWBIRD****SNOWBIRD****REAL NAME: Narya**

Snowbird's origins are traced back to ancient times when the Inuit gods of the North battled the Great Beasts. As both were exiled from earth, the Inuit gods wanted to create an agent to prevent the Beasts' return. Nelvanna, goddess of the Northern Lights, mated with a human. With the assistance of Michael Twoyoungmen, Nelvanna gave birth to a daughter, Narya. Twoyoungmen raised Narya as his own daughter and bound her to Canada, allowing her to assume human form. Both were recruited into Alpha Flight as Shaman and Snowbird. Snowbird's powers include Arctic Animal Shape-shifting, where she gains the special attributes of the animal she takes the form of.

KICKSTARTER EXCLUSIVE

SEASON 2

**SUNFIRE****SUNFIRE****REAL NAME: Shiro Yoshida**

Shiro Yoshida was born with solar radiation powers caused by World War II. After his mother died of radiation poisoning, his anti-American uncle Tomo wanted to use Shiro's power against America, dubbing him Sunfire. Tomo's plans were unsuccessful and Shiro eventually turned to the X-Men. Though always loyal to Japan, he helped the X-Men with many adventures.

KICKSTARTER EXCLUSIVE

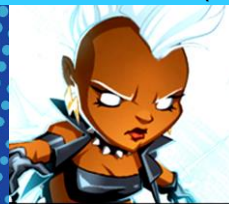
SEASON 2

**STRONG GUY****STRONG GUY****REAL NAME: Guido Carosella**

Guido Carosella was bullied by classmates who manifested his powers of bulking up his body when furious. He became the bodyguard of singer Lila Cheney but helped Dazzler with her career after Lila disappeared. Naming himself Strong Guy, Dazzler convinced him to join X-Factor and later the X-Factor Investigation agency to help them succeed.

KICKSTARTER EXCLUSIVE

SEASON 2

**STORM (MOHAWK)****STORM****REAL NAME: Ororo Munroe**

A descendent of African priestesses, Ororo Munroe shared the white hair, blue eyes, and magical abilities of her ancestors. After being orphaned at five and buried under stone in the accident, she developed severe claustrophobia. With no one to help her, she became a skilled thief trained by Achmed El Gibar. She unknowingly picked Professor Xavier's pocket and he discovered her true powers. When he was finally able to recruit her, he dubbed her Storm and convinced her that her mutant powers of weather manipulation could help the world. She fought valiantly with the X-Men.

KICKSTARTER EXCLUSIVE

SEASON 2



**SUNSPOT**



3  
 1  
 2  
 10

**SUNSPOT**

**SOLAR RE-CHANNELLING** (x3)

Gain 1 .  
You may turn any Action tokens you have into tokens.

**SOLAR RADIATION ABSORPTION** (x3)

At the end of your turn, gain 1 , , or token for each different Location you occupied this turn.

KICKSTARTER EXCLUSIVE

SEASON 2

**THE THING**



3  
 2  
 8  
 4

**THING**

**ROCK-LIKE SKIN**

[STARTING HAND]  
As long as this card is faceup in the Storyline, you may ignore 1 damage during each Villain turn.

**TEAMWORK** (x2)

Perform actions of the same type as all Action tokens on the Fantastic Four card. Then, add 1 token from the pool to the Fantastic Four card.

**IT'S CLOBBERIN' TIME**

against a single target in your Location. Then, against a different target there.

FANTASTIC FOUR

SEASON 2

**WARLOCK**



3  
 4  
 4  
 7

**WARLOCK**

**TECHNO-ORGANIC LIFEFORM**

[STARTING HAND]  
As long as this card is faceup in the Storyline, ignore the first Crisis token you receive during each Hero or Villain turn.

**TECHNO-ORGANIC FEEDING** (x2)

Draw 1 card. Then discard 1 Crisis token from your Location or from another Hero in your Location (if possible).

**NANITE WEAPON** (x2)

Gain 1 token. Then you may exchange Action tokens with another Hero in your Location.

KICKSTARTER EXCLUSIVE

SEASON 2

**WARPATH**



5  
 4  
 4  
 4

**WARPATH**

**ACUTE SENSES** (x2)

Look at the top card of the Master Plan deck and put it back on top.

**SUPERHUMAN PHYSICAL ABILITIES** (x2)

Draw 1 card.

KICKSTARTER EXCLUSIVE

SEASON 2

**WEAPON X**



3  
 3  
 9  
 2

**WEAPON X**

**HEALING FACTOR**

[STARTING HAND]  
As long as this card is faceup in the Storyline, you may ignore 1 damage each Villain turn. If you do so, your next Hero card must be played randomly.

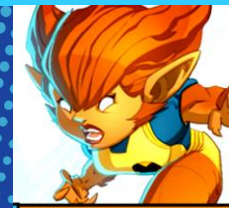
**ADAMANTIUM CLAWS** (x3)



KICKSTARTER EXCLUSIVE

SEASON 2

**WOLFSBANE**



5  
 2  
 4  
 5

**WOLFSBANE**

**FERAL ATTACK** (x2)

Defeat all in your Location.

**HYPER-KEEN SENSES** (x2)

If, during the next Villain turn, the Villain ends their movement in your Location, you may immediately move to an adjacent one and there.

KICKSTARTER EXCLUSIVE

SEASON 2

**WOLVERINE**



4  
 4  
 5  
 4

**WOLVERINE**

**ADAMANTIUM CLAWS** (x3)



**HEALING FACTOR**

[STARTING HAND]  
As long as this card is faceup in the Storyline, if you have less than 3 cards in hand at the end of a Villain turn, you may draw 1 card.

CORE SET

SEASON 2

**X-23**



3  
 4  
 6  
 5

**X-23**

**HEALING FACTOR**

[STARTING HAND]  
As long as this card is faceup in the Storyline, if you have less than 3 cards in hand at the end of a Villain turn, you may draw 1 card.

**TACTICAL GENIUS** (x2)

For each you perform this turn, give 1 or 1 token from the pool to any Hero.

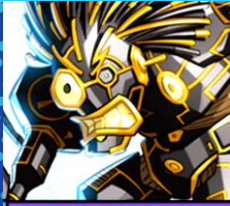
**MASTER MARTIAL ARTIST** (x2)

Double each on the previous Hero card in the Storyline.

KICKSTARTER EXCLUSIVE

SEASON 2

## WARLOCK



	3
	4
	4
	7

**WARLOCK**

**REAL NAME: Warlock**

Warlock's a member of a race of mechanical organisms that survive by infecting living creatures with the "techno-organic" transmode virus, before draining the life energy ("lifeglow") of the infected organism. Unlike others of his race, Warlock possesses some compassion, resulting in his being dubbed a mutant. Fleeing his home planet, he landed on Earth near Professor Charles Xavier's mansion and would eventually find himself a member of the Professor's New Mutants. It's here he discovered his powers included shape-shifting, color-changing abilities, and teleportation.

KICKSTARTER EXCLUSIVE

SEASON 2

## THE THING



	3
	2
	8
	4

**THING**

**REAL NAME: Ben Grimm**

Ben was a high school football player, a U.S. Air Force test pilot and then finally became an astronaut. During college he was roommates with Reed Richards, who would become his best friend and a brilliant scientist. Grimm was exposed to high levels of cosmic radiation when Richards persuaded him to pilot an unauthorized mission on the stolen Marvel-1 spaceship despite his own safety concerns. Grimm turned out to be right and was forced to abort the mission due to the radiation. The radiation mutated him into a super-strong, rock-like monster with a "Heart of Gold".

FANTASTIC FOUR

SEASON 2

## SUNSPOT



	3
	1
	2
	10

**SUNSPOT**

**REAL NAME: Roberto da Costa**

Born in Rio de Janeiro. Roberto da Costa grew up an avid soccer player until anger on the field manifested his mutant powers when his body turned into a solid black mass of solar energy. Sunspot was able to store solar energy in his body and convert it into flight and power up with superhuman abilities including a dark solar plasma blast. As the Hellfire Club tried to recruit Roberto, Xavier stepped in to save him. When his girlfriend was killed by a bullet meant for him, he joined the New Mutants.

KICKSTARTER EXCLUSIVE

SEASON 2

## WOLFSBANE



	5
	2
	4
	5

**WOLFSBANE**

**REAL NAME: Rahne Sinclair**

Orphan Rahne Sinclair was rescued, raised, and adopted by Doctor Moira MacTaggart after an exorcism was planned to remove her mutant ability to morph into a wolf. She became Wolfsbane and joined the New Mutants soon after. Later she would use her powers in X-Factor and Excalibur.

KICKSTARTER EXCLUSIVE

SEASON 2

## WEAPON X



	3
	3
	9
	2

**WEAPON X**

**REAL NAME: James "Logan" Howlett**

In an effort to aid the military using crafted mutant powers, Weapon X was a code name for the project in the Weapons Plus Program. They were enhancing mutants and giving normal humans mutant abilities through genetic engineering. Logan was the first mutant to undergo the risky Adamantium skeletal bonding procedure, in a project codenamed Experiment X. Part of the project involved implanting false memories to control him. Though the procedure was successful, Wolverine managed to escape, but he was left without his memories.

KICKSTARTER EXCLUSIVE

SEASON 2

## WARPATH



	5
	4
	4
	4

**WARPATH**

**REAL NAME: James Proudstar**

Mutant James Proudstar sought revenge on the X-Men after his brother Thunderbird's death, joining the Hellions once his superhuman powers manifested. Realizing his brother's death wasn't the fault of the X-Men, he refused to assassinate Xavier, though he remained with the Hellions. Feeling disillusioned by the group, he eventually left them. The Hellions took revenge by killing everyone on his reservation. Cable found him and asked him to join the X-Force. Fueled by his rage against the Hellions, Proudstar joined and became Warpath, fighting the Brotherhood of Evil Mutants and other villainous groups.

KICKSTARTER EXCLUSIVE

SEASON 2

## X-23



	3
	4
	6
	5

**X-23**

**REAL NAME: Laura Kinney**

An attempt to clone Wolverine resulted in the birth of X-23, a female named for the 23rd try. During her childhood, Laura Kinney was injected with radiation poisoning to activate her retractable bone claws, which were then coated in Adamantium. She was trained to react to a "trigger scent" that would send her into a blinding rage, unable to control herself. After being heavily manipulated by various groups, she met her biological father Wolverine who helped her join the X-Men and use her powers for good.

KICKSTARTER EXCLUSIVE

SEASON 2

## WOLVERINE



	4
	4
	5
	4

**WOLVERINE**

**REAL NAME: James "Logan" Howlett**

Having lived numerous lifetimes as a result of his regenerative mutation, the man known as Logan lost his memories during a fateful experiment run by the infamous Weapon X organization. Driven into a feral state by the intense process of having Adamantium metal bonded to his bones and mutant claws, Logan made a frenzied escape into the Canadian wilderness, later drifting from place to place seeking refuge from his past. He found a new home, and renewed meaning in life, when he met the X-Men, joining their ranks as the grizzled, unpredictable Wolverine.

CORE SET

SEASON 2